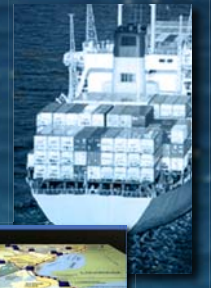


Visualization For Navigation Simulation Models - Why, What and How

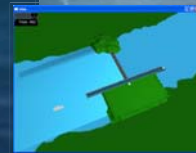
Contemporary problems for navigation planning and analysis in the United States

- Increased stakeholder involvement leads to heightened *scrutiny of public investments*
- More abundant and accessible electronic data are *increasing analytical expectations*
- Budget constraints and competition for limited funding *require improved decision making methods*
- Real-world complexity and variability demands *effective communication strategies*



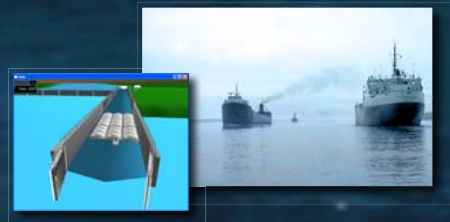
IWR responds to the challenge through innovative model development solutions

- Achieving model transparency through “glass box” development approaches
- Increasing credibility and stakeholder confidence with data/model validation and certification
- Illuminating underlying relationships and impacts of alternative actions to decision makers with fully integrated graphical visualization



The IWR Navigation Economic Technologies (NETS) program is developing decision support tools for:

- Inland navigation
- Deep-draft navigation
- Lock analysis models



For further information contact:

Keith D. Hofseth
nets@usace.army.mil

Cory M. Rogers
rogerscm@cdm.com

